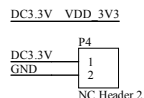
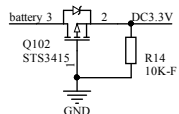
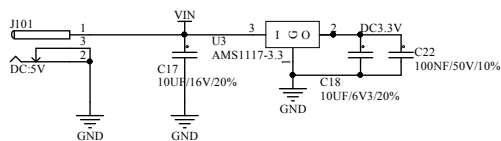


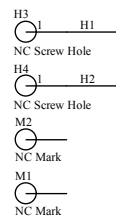
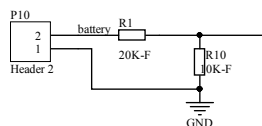
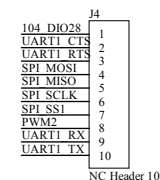
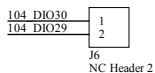
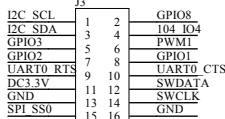
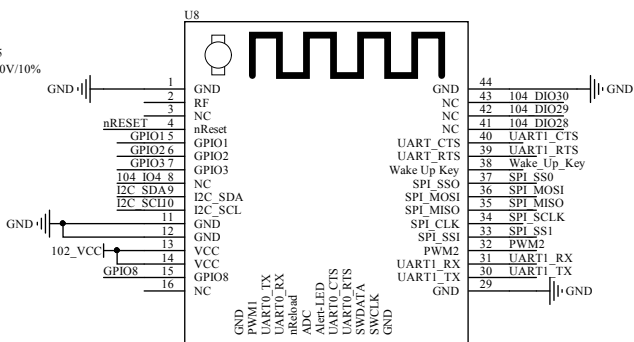
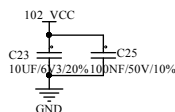
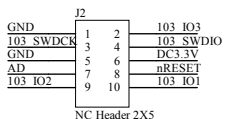
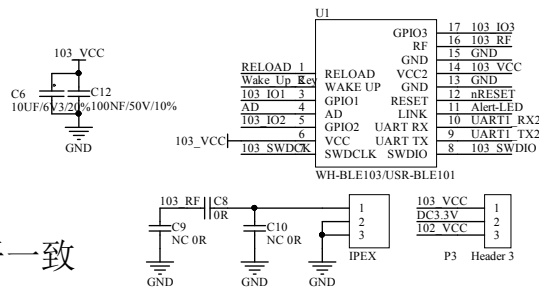
# Power



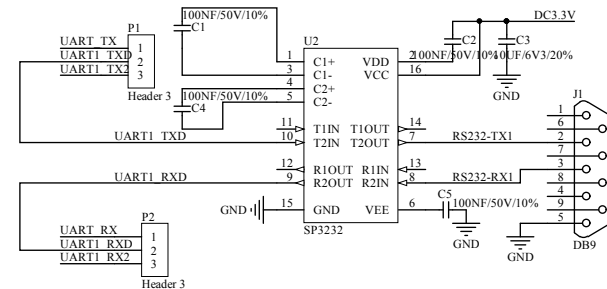
# BLE102/103/104

注意!!!

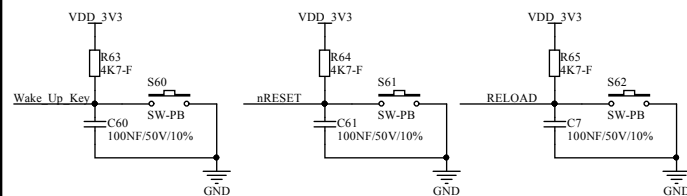
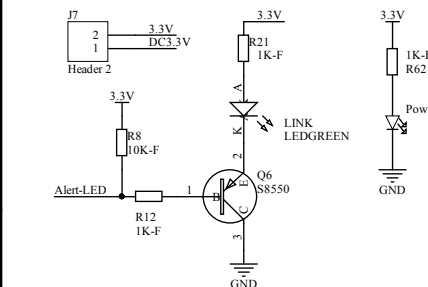
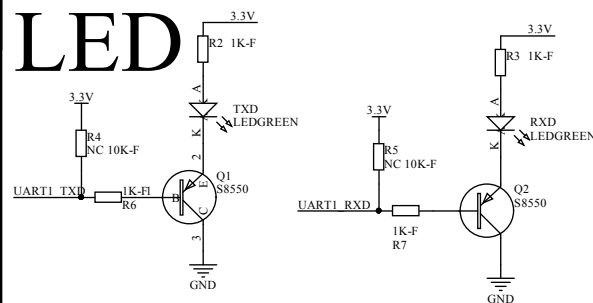
- 1, 模块供电电压必须严格小于其最大允许电压
- 2, 需要留下相关下载接口便于模块升级固件
- 3, 外部接口和模块接口直接连接时必须保证电平一致



# RS232



# LED



# Keys

Title		
WH-BLE-EVK		
Size	Number	Revision
A3		
Date:	2018-12-15	Sheet of
File:	E:\封装库\WH-BLE-EVK-V1.3 参考Doc	